

Sheepylove Pelota 2 Build Doc

Updated: 2026-03-05

It's woolly, it's greasy, it's Sheepylove.

△ **LEGACY BUILD WARNING:** This is a legacy build. The I/O may be different from the standard and the LED may not be onboard or may not be in the place where you expect.

Disclaimer: All trademarks and registered trademarks are the property of their respective owners. The company, product, and service names used in this document are for comparative purposes only. Use of these names, logos, and brands does not imply affiliation nor endorsement.

Sounds like an original PT2399 delay design by dylan159

A great sounding PT2399 delay, perhaps my favourite, with modulation if you want it. I like to keep the modulation low enough that you barely know it's there.

Find the original post by dylan159 over at their site [here](#).

Copyright: Sheepylove.com 2026-03-05

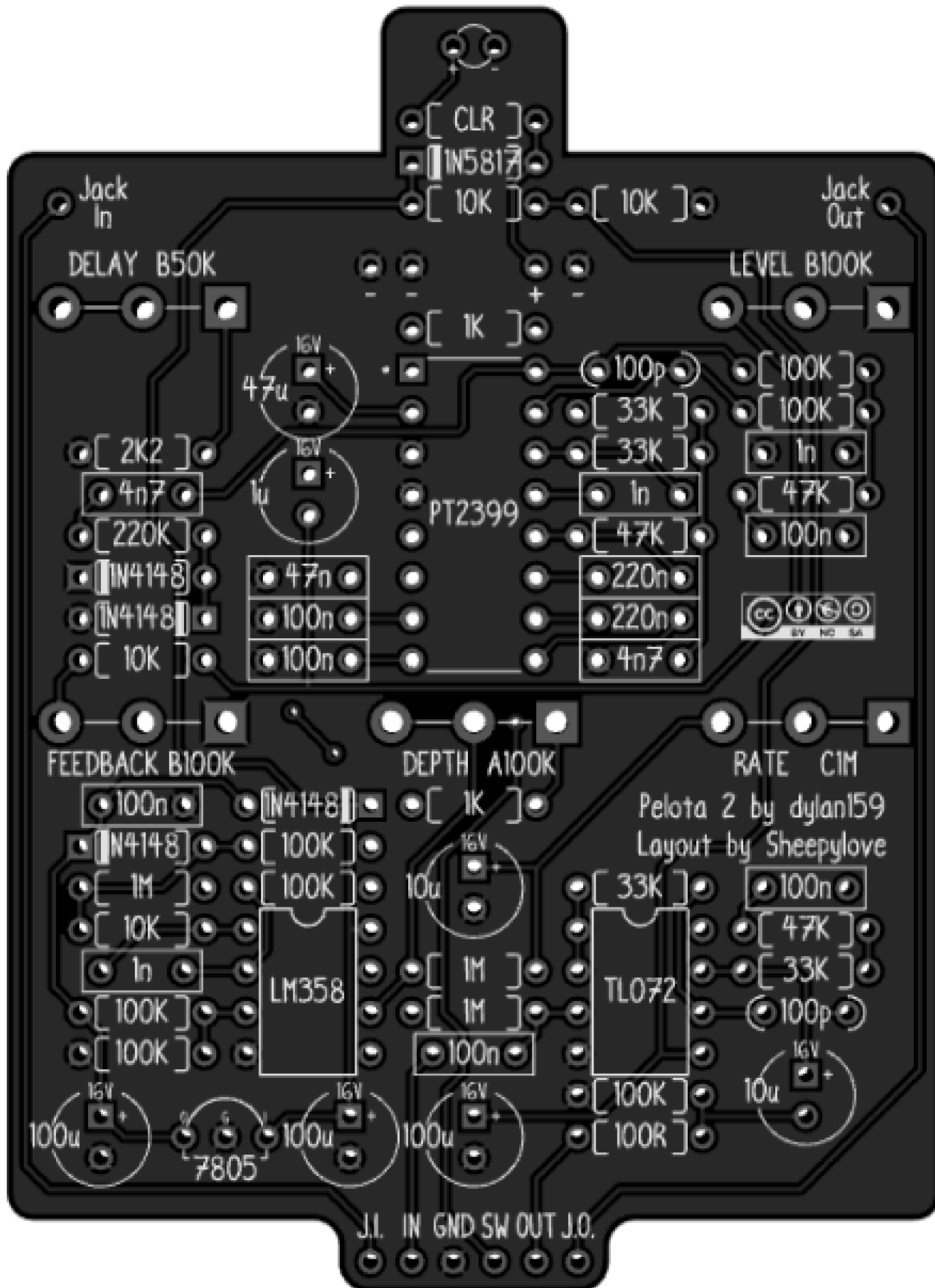
Bill of Materials

Reference	Value	Quantity
C1, C2, C3	100u	3
C4, C5, C7, C8, C10, C19	100n	6
C6, C15, C22	1n	3
C9	47u	1
C11, C20	100p	2
C12, C16	4n7	2
C13, C14	220n	2
C17	1u	1
C18	47n	1
C21, C23	10u	2
D1		1
D2, D3, D4, D5	1N4148	4
D101	1N5817	1
DELAY	B50K	1
DEPTH	A100K	1
FEEDBACK, LEVEL	B100K	2
IC1	TL072	1
IC2	LM358	1
R1, R2, R13, R23	10K	4
R3, R22, R25	1M	3
R4, R11, R14	47K	3
R5, R7, R17, R19, R20, R21, R24	100K	7
R6	2K2	1
R8	220K	1
R9, R10, R15, R16	33K	4
R12, R26	1K	2
R18	100R	1
R101	CLR	1
RATE	C1M	1
REG1	7805	1
U1		1
U2		1
U3		1
U4		1
U5	PT2399	1

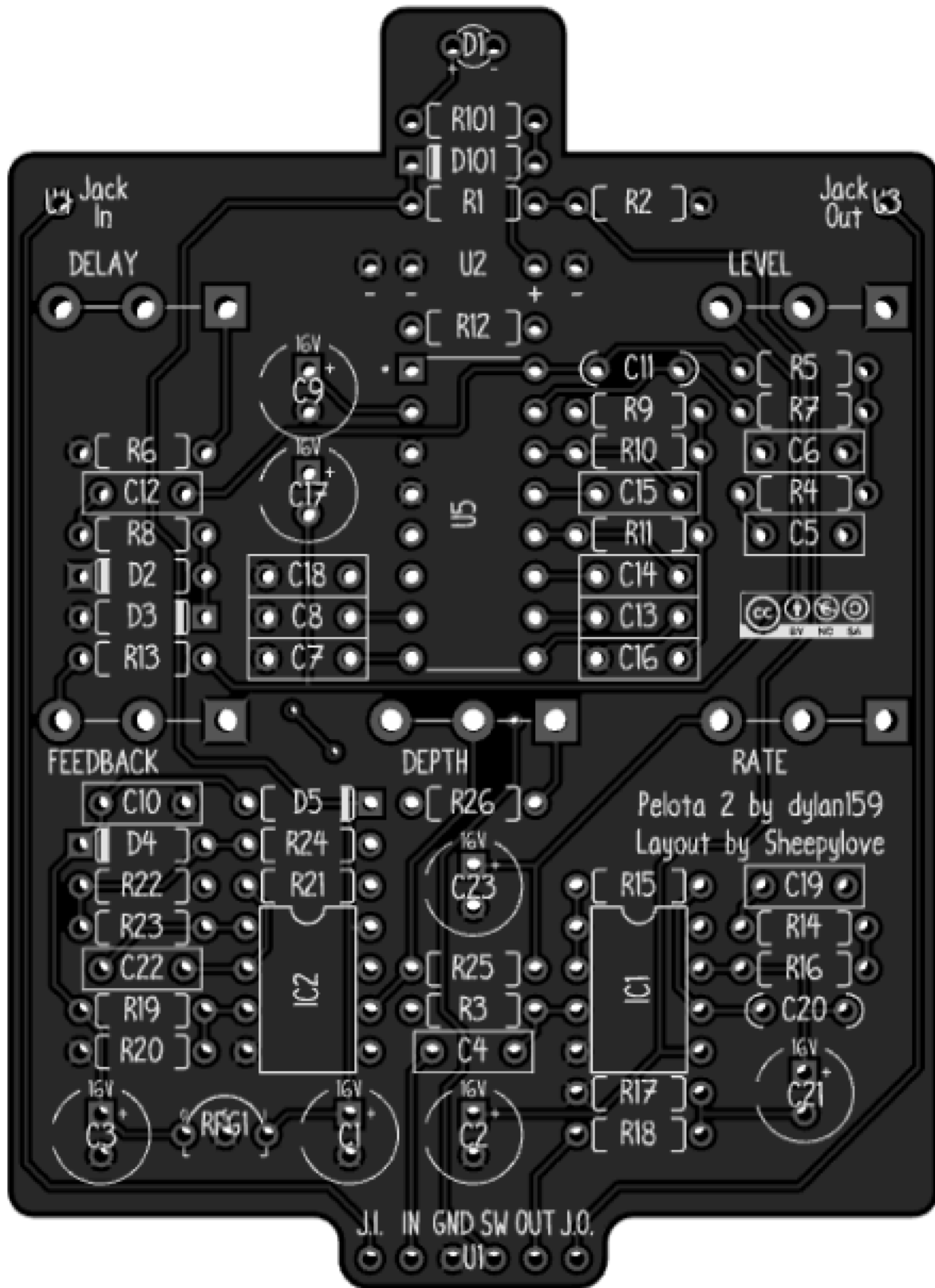
Copyright: Sheepllove.com 2026-03-05

PCB Images

Top View



ResDef



Pelota 2 by dylan159
Layout by Sheepylove

Copyright: Sheepllove.com 2026-03-05

B

A

2

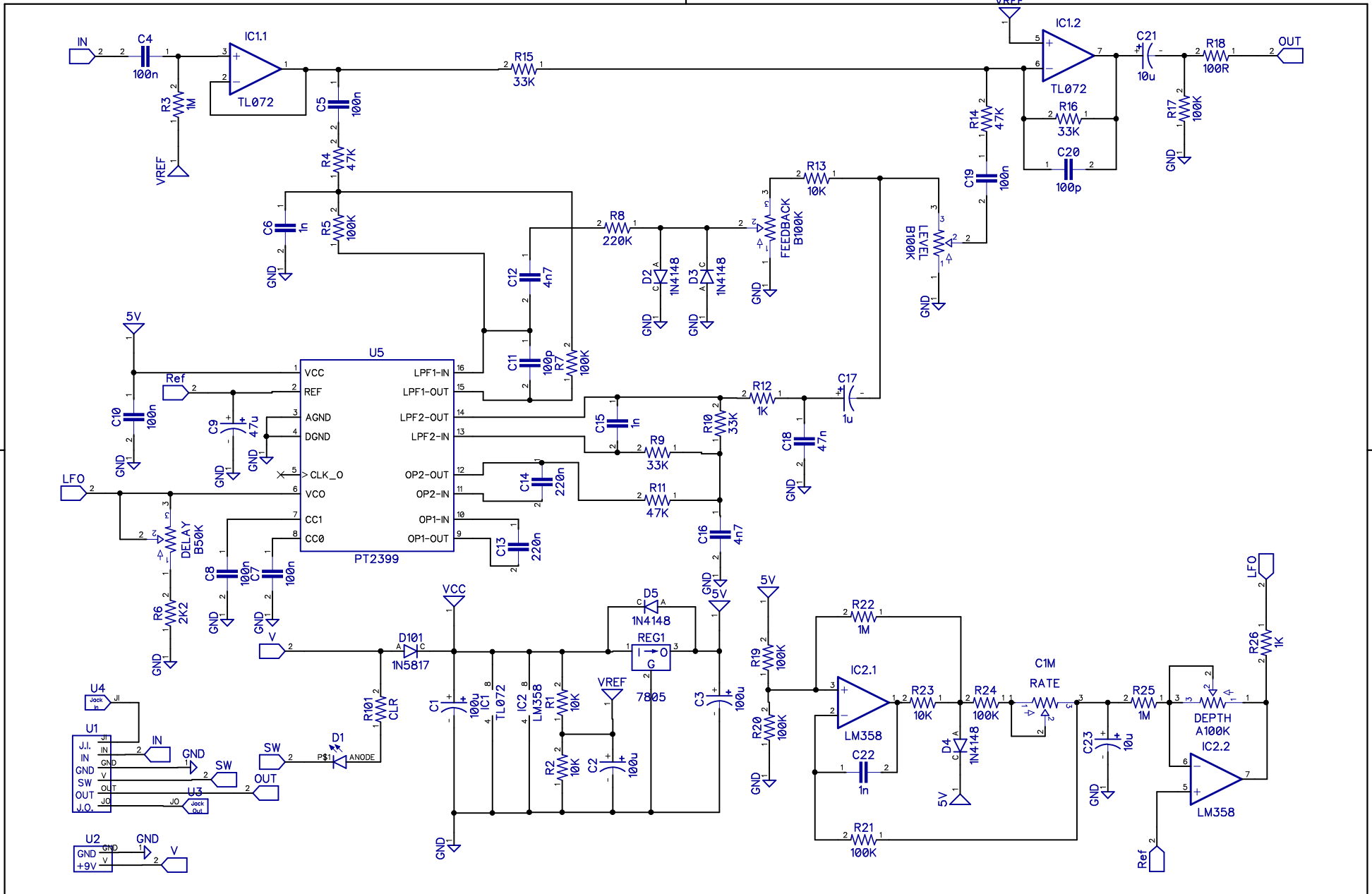
1

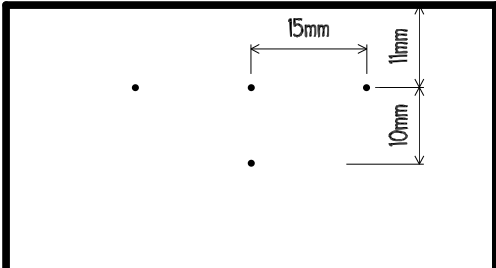
2

1


B

A





Sheepylove Drill Template

-20.3	0	20.3
38.1 •	• LED	•
12.7 •	•	•
0	+	
-12.7		
		
-45.1	• Footswitch	

All units are in millimeters.