

Sheepylove California Red Build Doc

Updated: 2026-03-05

It's woolly, it's greasy, it's Sheepylove.

△ **LEGACY BUILD WARNING:** This is a legacy build. The I/O may be different from the standard and the LED may not be onboard or may not be in the place where you expect.

Disclaimer: All trademarks and registered trademarks are the property of their respective owners. The company, product, and service names used in this document are for comparative purposes only. Use of these names, logos, and brands does not imply affiliation nor endorsement.

Sounds like the Celestial Overdrive by Celestial Engineering

Copyright: Sheepylove.com 2026-03-05

Bill of Materials

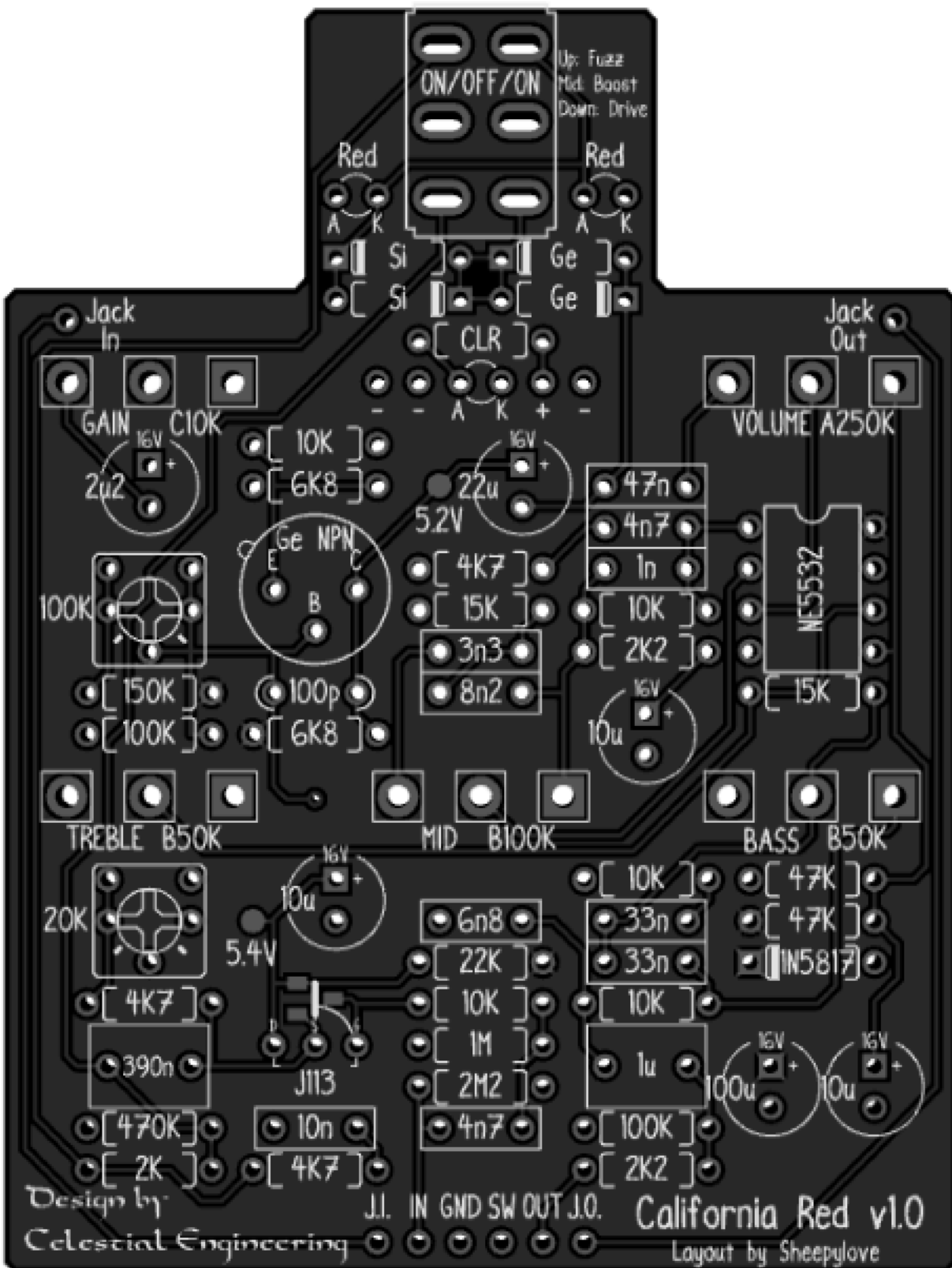
Reference	Value	Quantity
BASS, TREBLE	B50K	2
BIAS1	20K	1
BIAS2	100K	1
BIASQ1	5.4V	1
BIASQ2	5.2V	1
C1	100u	1
C2, C6, C13	10u	3
C3, C15	4n7	2
C4	390n	1
C5	10n	1
C7	100p	1
C8	2u2	1
C9	22u	1
C10	47n	1
C11	3n3	1
C12	8n2	1
C14	1n	1
C16, C17	33n	2
C18	6n8	1
C19	1u	1
D1, D2	Ge	2
D3, D4	Si	2
D5, D6	Red	2
D101	1N5817	1
GAIN	C10K	1
IC1	NE5532	1
MID	B100K	1
MODE	ON/OFF/ON	1
Q1	J113	1
Q2	Ge NPN	1
R1, R2	47K	2
R3	2M2	1
R4	1M	1
R5, R15, R17, R19, R21	10K	5
R6, R9, R20	4K7	3
R7	470K	1
R8	2K	1
R10	22K	1
R11	150K	1
R12, R14	6K8	2
R13, R24	100K	2

Reference	Value	Quantity
R16, R22	15K	2
R18, R23	2K2	2
R101	CLR	1
U1		1
U2		1
U3		1
U4		1
VOLUME	A250K	1

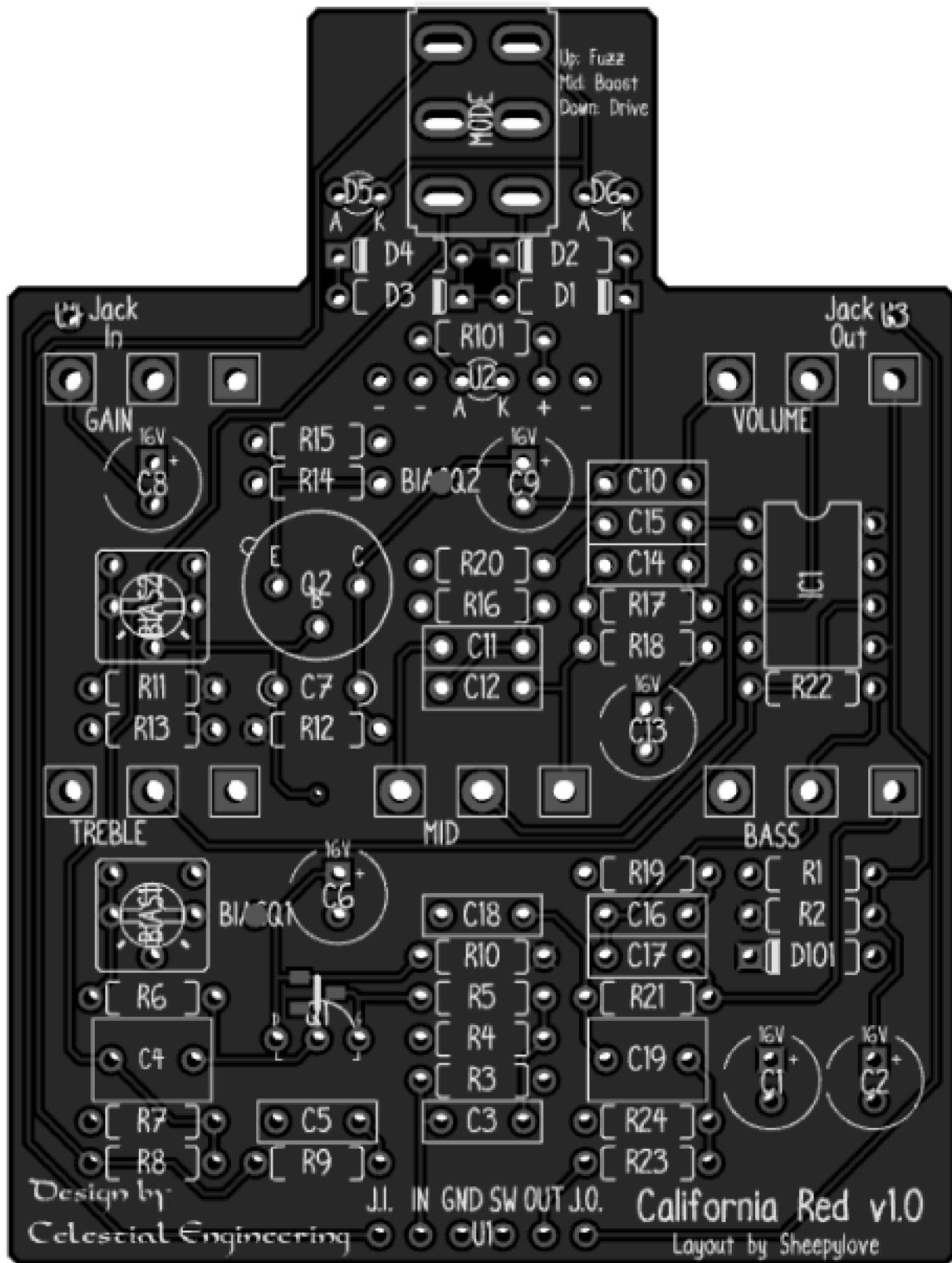
Copyright: Sheepllove.com 2026-03-05

PCB Images

Top View



ResDef



Copyright: Sheepllove.com 2026-03-05

B

A

2

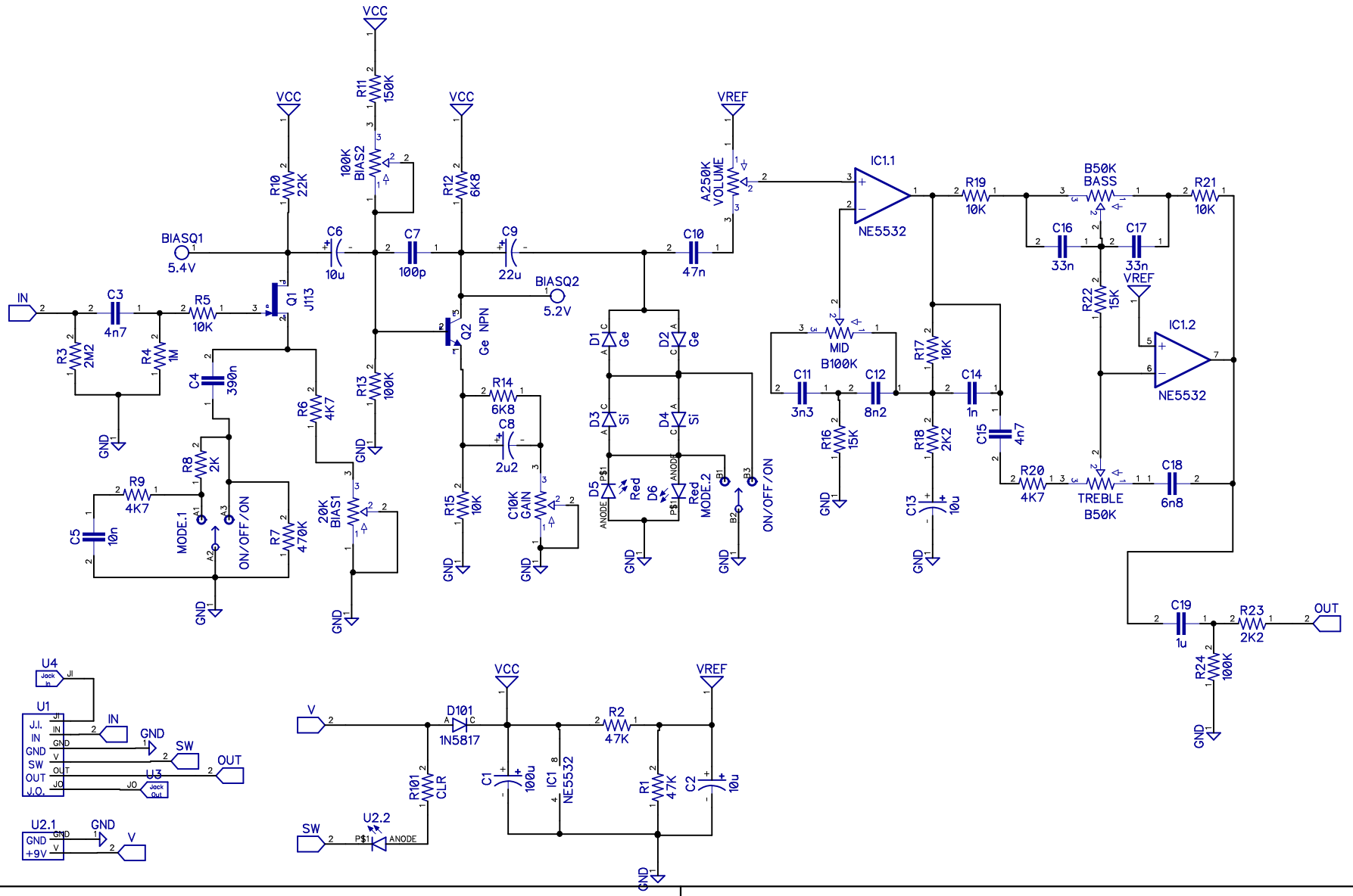
1

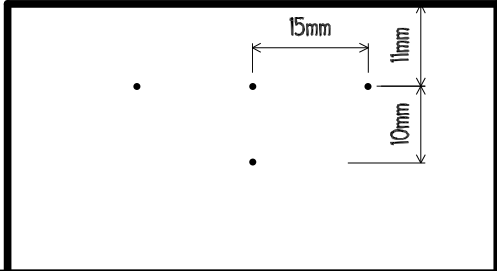
2

1


B

A





Sheepylove Drill Template

-20.3	0	20.3
38.1 •	•	•
12.7 •	•	•
0	+	
-12.7	• LED	
		
-45.1	• Footswitch	

All units are in millimeters.