

# Sheepyllove Celestial Screamer Build Doc

Updated: 2026-02-21

It's woolly, it's greasy, it's Sheepyllove.

**Disclaimer:** All trademarks and registered trademarks are the property of their respective owners. The company, product, and service names used in this document are for comparative purposes only. Use of these names, logos, and brands does not imply affiliation nor endorsement.

## Sounds like a hot rod Tube Screamer

A great design by Celestial Engineering, aka Chuck D Bones. It takes all that is good with a Tube Screamer, and adds some great tone shaping abilities.

The main circuit is pretty flexible. There's a boost upfront, followed by a low cut which lets you take out some of that bass when you slam the next gain stages. In between those is a hi-cut which lets you stop the high end from going wild. I look at these as the gain EQ.

After all that, there's a Baxandall EQ stack! Adjust to your amp and go!

It's a lot of knobs, but they all do the right things in the right places. It's my choice when I want to tailor a TS tone.

Copyright: Sheepyllove.com 2026-02-21

## Bill of Materials

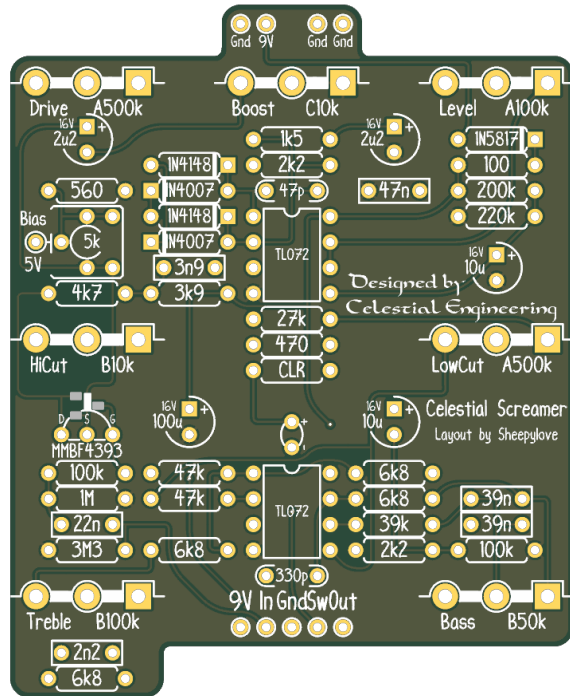
Reference	Value	Quantity	Notes
C1	100u	1	
C2,C13	10u	2	
C3	22n	1	
C4,C7	2u2	2	
C5	3n9	1	
C6	47p	1	
C8	47n	1	
C9,C10	39n	2	
C11	2n2	1	
C12	330p	1	
D1	1N5817	1	
D2	LED	1	
D3,D5	1N4007	2	
D4,D6	1N4148	2	
IC1,IC2	TL072	2	Usual dual op-amp suspects can be used. 4558, etc.
POT1	A100k	1	
POT2	C10k	1	
POT3,POT7	A500k	2	
POT4	B50k	1	
POT6	B100k	1	
POT8	B10k	1	
Q1	MMBF4393	1	
R1	CLR	1	
R2	100	1	
R3	200k	1	
R4	220k	1	
R5	3M3	1	
R6	1M	1	
R7,R23	100k	2	
R8	560	1	
R9	4k7	1	
R10	3k9	1	
R11	27k	1	
R12,R22	2k2	2	
R13	1k5	1	
R14	470	1	
R15,R16	47k	2	

Reference	Value	Quantity	Notes
R17,R18,R20,R21	6k8	4	
R19	39k	1	
RV1	5k	1	

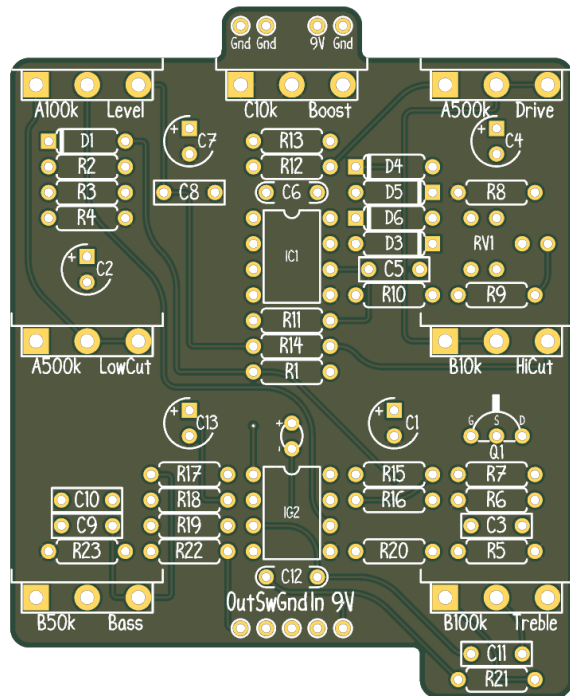
Copyright: Sheepllove.com 2026-02-21

# PCB Images

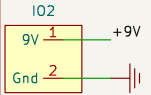
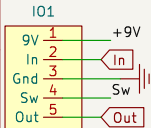
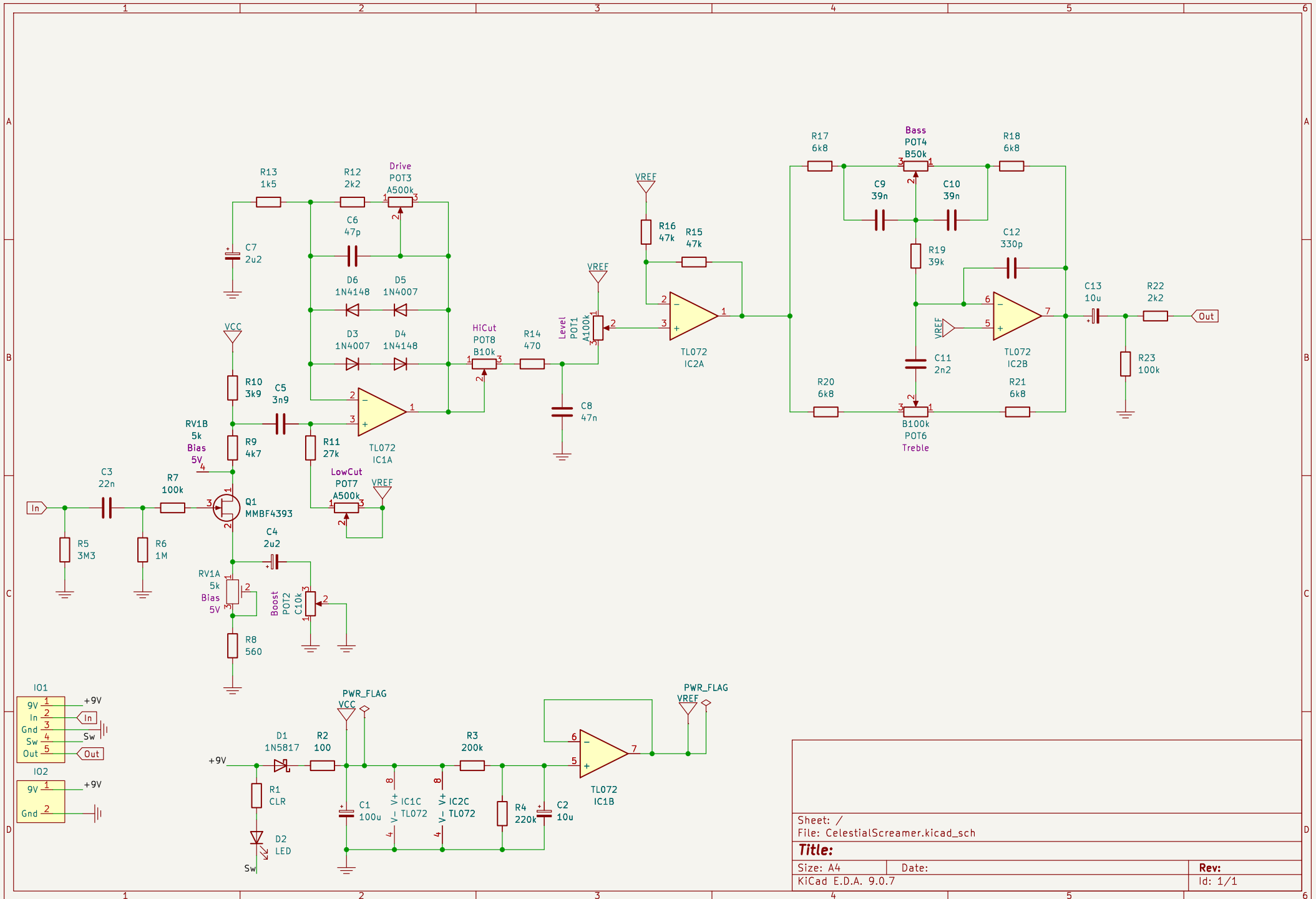
## Top View



## Bottom View



Copyright: Sheepllove.com 2026-02-21



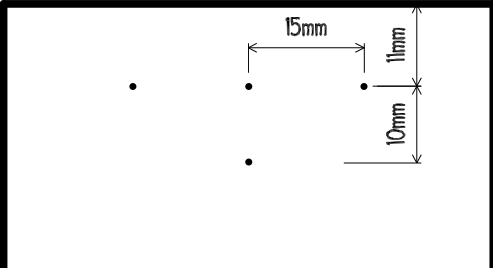
Sheet: /  
File: CelestialScreamer.kicad\_sch

**Title:**


Size: A4  
KiCad E.D.A. 9.0.7

Date:

**Rev:**  
Id: 1/1



### Sheepylove Drill Template

-20.3	0	20.3
38.1 •	•	•
12.7 •		•
0	+	
-12.7 •	• LED	•
		
-45.1	• Footswitch	

All units are in millimeters.