

Sheepylove SmartIo Build Doc

Updated: 2026-02-15

It's woolly, it's greasy, it's Sheepylove.

Disclaimer: All trademarks and registered trademarks are the property of their respective owners. The company, product, and service names used in this document are for comparative purposes only. Use of these names, logos, and brands does not imply affiliation nor endorsement.

Smart IO

An IO board with relay, over-voltage and reverse polarity protection. Just add a couple of audio jacks, a DC one, connect up a SPST momentary footswitch (normally open), then connect to your PCB!

Give it that soft switch class!

Copyright: Sheepylove.com 2026-02-15

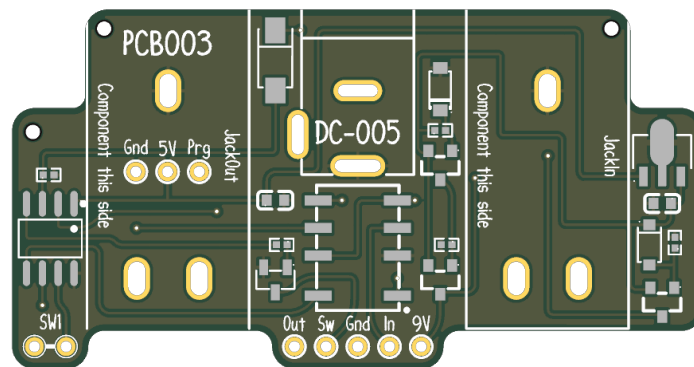
Bill of Materials

Reference	Value	Quantity	Notes
C1	1u	1	
C2	100n	1	
D1	10V	1	
R1-R3,R5	1M	4	
R4	10k	1	
SW1	SPST	1	
U1,U3,U4	A03401A	3	
U2	15V	1	
U5	78L05G-AB3-R	1	
U6	ATTINY412-SSNR	1	
U7	HFD4_4_5-LSR	1	
U8	2N7002_C7420321	1	
U10	7.5V	1	

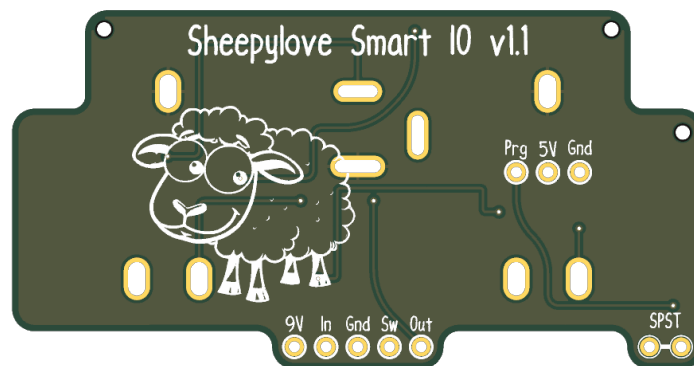
Copyright: Sheepylove.com 2026-02-15

PCB Images

Top View



Bottom View



Copyright: Sheepylove.com 2026-02-15

